

ACME Electronics Corporation

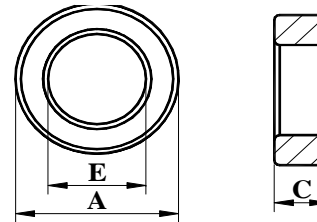
Large Manganese-Zinc Toroid Cores



Ordering Code: T38*19*6.35 C G
 Material A102 Core Size Coating Gapped AL Value

Coating Types

- C : Epoxy Coating
- P : Parylene Coating
- W : Powder Coating



ACME Magnetics USA, Inc.
 Sales@acmemagusa.com
 www.acmemagusa.com

CORES	DIMENSIONS (mm)			EFFECTIVE PARAMETERS					ELECTRICAL CHARACTERISTICS								
	COATED DIMENSIONS (mm)								AL±25% (nH/N ²)						AL±30% (nH/N ²)		
	A	E	C	Cl(mm ⁻¹)	Le(mm)	Ae(mm ²)	Ve(mm ³)	Wt(g/set)	P4	P5	A041	A05	A06	A07	A10	A102	A12
T38*19*6.35	38.00±0.60	19.00±0.60	6.35±0.30	1.48	89.49	60.33	5398.48	26.45	2120			4240	5084	5930	8800	8800	
	39.20max	17.80min	7.25max														
T38.1*19*12.7	38.10±0.60	19.00±0.60	12.70±0.40	0.74	89.65	121.29	10872.84	53.28	4250			8500	10204	11900	16700	16700	
	39.30max	17.80min	13.70max														
T38.1*19*25.4	38.10±0.60	19.00±0.60	25.40±0.60	0.37	89.65	242.57	21745.67	106.55	8503			17000	20407	23800	33400	33400	
	39.30max	17.80min	26.40max														
T42*26*12.8	42.00±0.80	26.00±0.80	12.80±0.40	1.04	106.76	102.40	10932.22	52.07	3010			6030	7234	8440	12050	12050	
	43.40max	24.60min	13.80max														
T44.3*19*15.9	44.30±0.80	19.00±0.60	15.90±0.40	0.49	99.38	201.14	19989.00	97.95	6360			12700	8167	17800	23200	23200	
	45.70max	17.80min	16.90max														
T46.9*27*15	46.90±0.80	27.00±0.80	15.00±0.40	0.78	116.02	149.25	17316.43	84.85	4040			8080	9785	11320	16100	16100	
	48.30max	25.60min	16.00max														
T49.1*31.8*15.9	49.10±1.00	31.80±1.00	15.90±0.40	0.92	127.01	137.54	17468.73	85.60	2940			5870	15264	8220	11800	11800	
	50.70max	30.20min	16.90max														
T49.1*31.8*19.05	49.10±1.00	31.80±1.00	19.05±0.50	0.77	127.01	164.78	20929.52	102.55	4080			8150	13875	11400	14870	14870	
	50.70max	30.20min	20.15max														
T49.1*33.8*15.9	49.10±1.00	33.80±1.00	15.90±0.40	1.07	130.15	121.64	15831.45	76.17	3400			6800	7049	9530	12130	12130	
	50.70max	32.20min	16.90max														
T49.1*33.8*31.30	49.10±1.00	33.80±1.00	31.30±1.00	0.54	130.15	239.45	31164.49	152.71	5780			11560	11238	16190	23600	23600	
	50.70max	32.20min	32.90max														
T55.5*32.6*18	55.50±1.10	32.60±1.10	18.00±0.50	0.67	138.32	206.10	28507.75	133.44	4680			9365	9702	13110	18730	18730	
	57.20max	30.90min	19.10max														
T61*35.6*12.7	61.00±1.20	35.60±1.00	12.70±0.40	0.94	151.66	161.29	24461.56	119.86	3340			6680	8021	9360	13690	13690	
	62.80max	34.00min	13.70max														
T63*38*24.5	63.00±1.20	38.00±1.00	24.50±0.40	0.52	158.57	306.25	48562.06	237.95	6070			12140	14566	17000	25100	25100	
	64.80max	36.40min	25.50max														
T73.7*38.9*12.5	73.70±1.50	38.90±1.00	12.50±0.40	0.81	176.78	217.50	38450.09	188.41	3870			7730	9279	10830	16280	16280	
	75.80max	37.30min	13.50max														
T85.7*55.5*12.7	85.70±1.50	55.50±1.10	12.70±0.40	1.16	221.68	191.77	42512.34	208.31	2720			5440	6524	7600	11040	11040	
	87.80max	53.80min	13.70max														