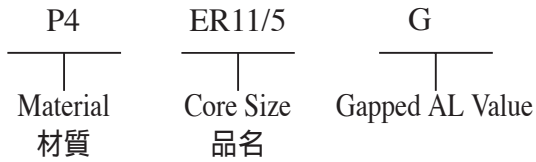


Type : ER Cores (1)

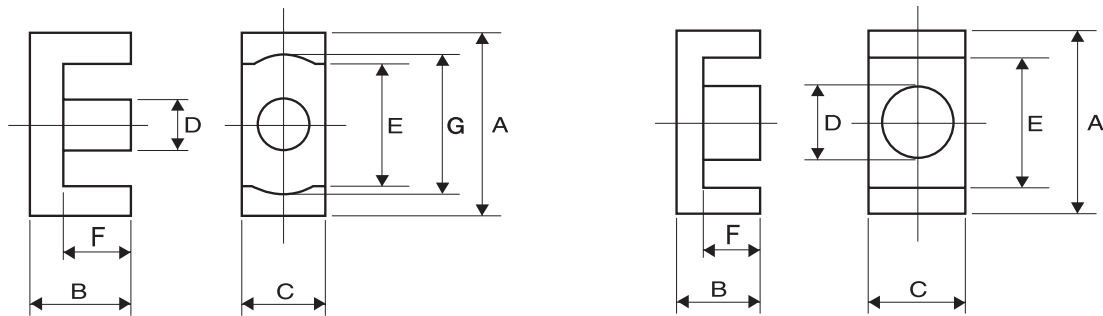
Ordering Code:



Shape:

Type:1

Type:2



DIMENSIONS

CORES	DIMENSIONS (mm)							Type
	A	B	C	D	E	F	G	
ER7.5/5	7.50 ± 0.15	2.50 ± 0.10	4.00 ± 0.10	2.60 ± 0.10	5.70 ± 0.10	1.75 ± 0.07	6.22 ^{+0.13} / _{-0.12}	1
ER9.5/5	9.35 ± 0.15	2.45 ± 0.05	4.90 ± 0.10	3.40 ± 0.10	7.00min	1.67 ± 0.07	7.40min	1
ER11/3.9	10.83 ^{+0.18} / _{-0.17}	1.93 ± 0.05	5.90 ± 0.10	4.12 ^{+0.13} / _{-0.12}	7.90min	1.05 ^{+0.08} / _{-0.07}	8.85 ± 0.15	1
ER11/5	10.83 ^{+0.18} / _{-0.17}	2.45 ± 0.05	5.90 ± 0.10	4.12 ^{+0.13} / _{-0.12}	7.90min	1.57 ^{+0.08} / _{-0.07}	8.85 ± 0.15	1
ER14.5/6	14.50 ± 0.20	2.95 ± 0.05	6.70 ± 0.10	4.70 ± 0.10	11.80 ± 0.20	1.60 ± 0.10	–	2
ER14.5/6.8	14.50 ± 0.20	3.40 ± 0.10	6.70 ± 0.10	4.70 ± 0.10	11.80 ± 0.20	2.10 ± 0.10	–	2

EFFECTIVE PARAMETERS

CORES	EFFECTIVE PARAMETERS				
	$C_i(\text{mm}^{-1})$	$L_e(\text{mm})$	$A_e(\text{mm}^2)$	$V_e(\text{mm}^3)$	$Wt(\text{g/set})$
ER7.5/5	2.26	13.06	5.78	75.51	0.35
ER9.5/5	1.56	13.63	8.73	118.99	0.62
ER11/3.9	1.01	12.14	11.92	144.70	0.80
ER11/5	1.17	14.18	12.13	172.00	0.90
ER14.5/6	1.07	18.38	17.13	314.85	1.69
ER14.5/6.8	1.17	20.18	17.18	346.69	1.90

ELECTRICAL CHARACTERISTICS

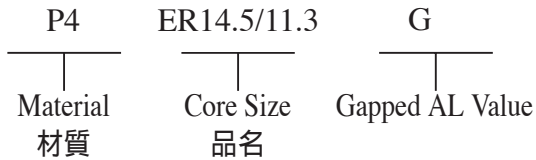
CORES	$AL \pm 25\% (\text{nH/N}^2)$									$AL \pm 30\% (\text{nH/N}^2)$		
	P4	P41	P46	P5	P51	P52	N42	A05	A07	A10(L)	A121(L)	A151(L)
ER7.5/5	710		730	630	450		775	950				
ER9.5/5	950	930	1080	880	660		1090	1250	1580	3600	3200min	
ER11/3.9	1040min	1340										
ER11/5	1400	1370		1120			1490	2100	2380	6400	6980	
ER14.5/6	1700	1600		1360	1210		1970	2200	2600	6600	8000	6000min
ER14.5/6.8	1300											

Remark:

1. AL Value Testing Condition : 10kHz, 50mV, 100Ts. If testing condition is different from ACME's, please specify upon request & ordering.
2. Gapped core is available, please specify upon request & ordering. ACME's standard gapped core set is a combination of one gapped core and one ungapped core. If gapping on both pcs to make a set is needed, please specify upon request & ordering.
3. L : Mirror Finished Lapping. Please specify upon request & ordering by adding "L" at the end of Core Size if you need.

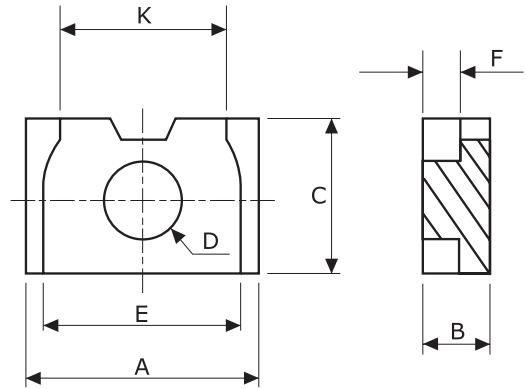
Type : ER Cores (2)

Ordering Code:

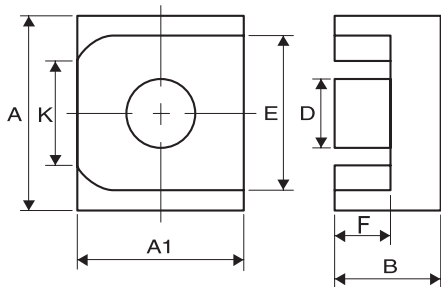


Shape:

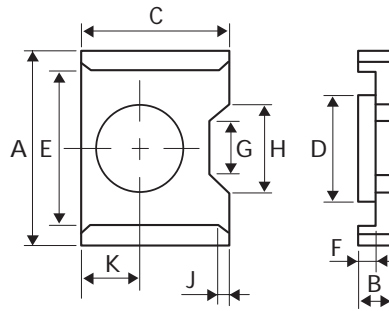
Type:1



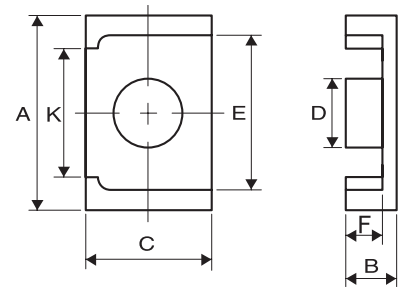
Type:2



Type:3



Type:4



DIMENSIONS

CORES	DIMENSIONS (mm)										
	A	B	C	D	E	F	G	H	J	K	TYPE
ER10/4.3	9.90 ± 0.15	2.15 ± 0.10	7.80 ^{+0.10} / _{-0.13}	3.70 ± 0.10	8.10 ^{+0.15} / _{-0.10}	1.10 ^{+0.08} / _{-0.07}	-	-	-	6.50 ± 0.15	1
ER10/4.46A	9.90 ± 0.20	2.23 ± 0.10	7.80 ± 0.15	3.70 ± 0.10	8.10 ± 0.20	1.13 ± 0.10	-	-	-	6.50 ± 0.15	4
ER12/9/5	12.20 ± 0.15	2.50 ± 0.08	9.00 ^{+0.13} / _{-0.12}	5.55 ± 0.10	10.00 ± 0.15	1.00 ± 0.08	-	-	-	8.60 ± 0.15	1
ER12/9/5.7	12.20 ± 0.20	2.87 ± 0.06	9.00 ± 0.15	5.55 ± 0.10	10.00 ± 0.20	1.37 ± 0.06	-	-	-	8.60 ± 0.15	1
ER12/9/8	12.20 ± 0.20	4.00 ± 0.06	9.00 ± 0.15	5.55 ± 0.10	10.00 ± 0.15	2.50 ± 0.06	-	-	-	8.60 ± 0.15	1
ER13.6/9.35/4.5	13.60 ± 0.15	2.25 ± 0.10	9.35 ± 0.10	5.60 ^{+0.08} / _{-0.15}	11.05min	1.20 ± 0.10	3.60 ± 0.10	4.80 ± 0.10	1.10 ± 0.10	3.80 ± 0.10	3
ER14.5/11.3	14.50 ± 0.20	11.30 ± 0.20	4.10 ± 0.10	6.00 ± 0.12	12.20 ± 0.15	2.90 ± 0.10	-	-	-	8.30 ± 0.15	2



EFFECTIVE PARAMETERS

CORES	EFFECTIVE PARAMETERS				
	C _i (mm ⁻¹)	Le(mm)	Ae(mm ²)	Ve(mm ³)	Wt(g/set)
ER10/4.3	0.75	11.51	15.20	174.95	1.16
ER10/4.46A	0.78	11.80	15.12	178.42	1.12
ER12/9/5	0.50	13.39	26.72	357.78	2.34
ER12/9/5.7	0.56	14.87	26.46	393.46	2.52
ER12/9/8	0.74	19.36	25.95	502.39	2.64
ER13.6/9.35/4.5	0.69	14.66	21.27	311.68	2.02
ER14.5/11.3	0.70	20.12	28.53	574.02	3.46

ELECTRICAL CHARACTERISTICS

CORES	AL ± 25% (nH/N ²)							
	P4	P41	P46	P5	P51	P52	N4	N42
ER10/4.3	1750	1700		1560	1280	1560		
ER10/4.46A	1850							
ER12/9/5	3330	2600		2550	2170			3350
ER12/9/5.7	3310		3150	2400				3170
ER12/9/8	2350		2700	1880	1550			
ER13.6/9.35/4.5		1850						
ER14.5/11.3	2500	2400	3000					

Remark:

1. AL Value Testing Condition : 10kHz, 50mV, 100Ts. If testing condition is different from ACME's, please specify upon request & ordering.
2. Gapped core is available, please specify upon request & ordering. ACME's standard gapped core set is a combination of one gapped core and one ungapped core. If gapping on both pcs to make a set is needed, please specify upon request & ordering.